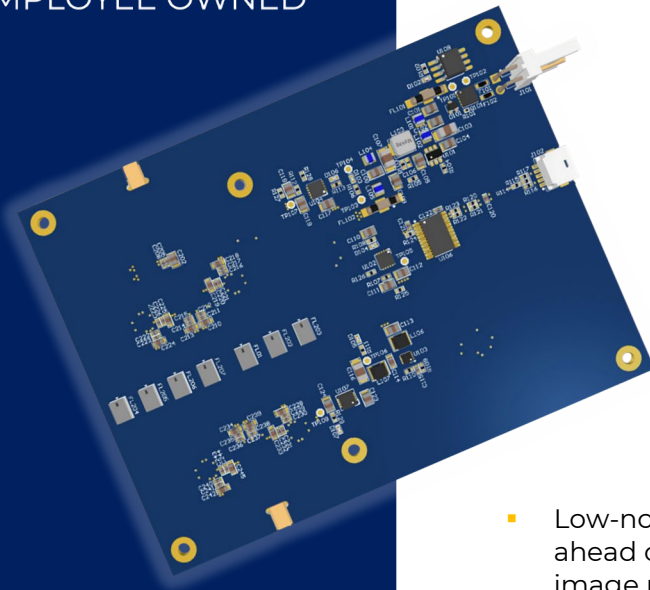


WASP LNA PRESELECTOR

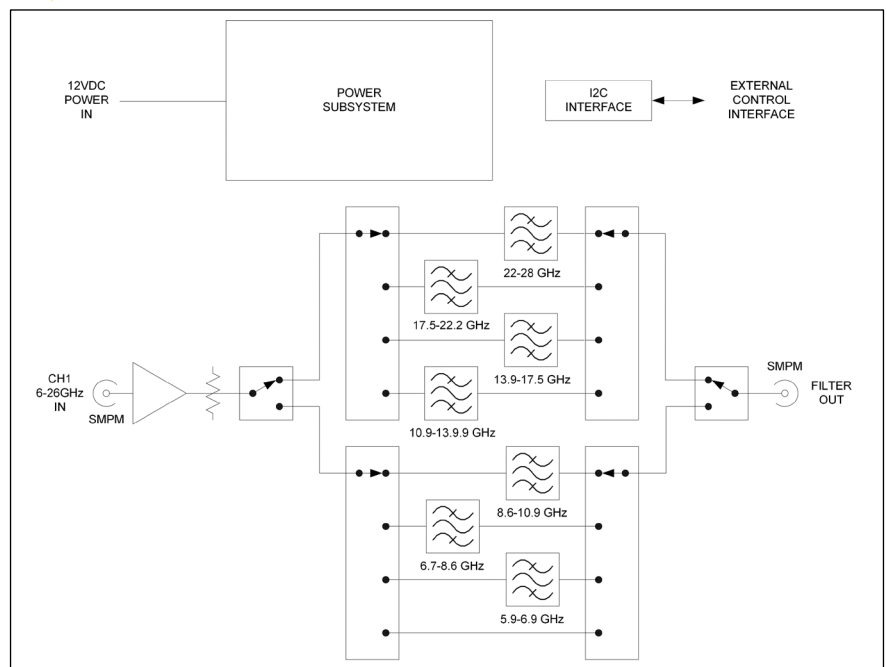
LOW-NOISE AMPLIFIER
SWITCHED FILTER BANK PRESELECTOR



- Covers 6-GHz to 26.5-GHz range for WASP Block Downconverter to improve image rejection and noise figure (NF)
- Eight selectable signal paths:
 1. Pass through
 2. 5.9–6.9 GHz
 3. 6.7–8.6 GHz
 4. 8.6–10.9 GHz
 5. 10.9–13.9 GHz
 6. 13.9–17.5 GHz
 7. 17.5–22.2 GHz
 8. 22–28 GHz

- Low-noise amplifier and switched filter bank can be inserted ahead of the WASP Block Downconverter input to improve image rejection and NF
- Board is controlled by the MCU on the downconverter board through an I2C interface connection
- Preselector board can also be used with the WASP Block Upconverter board output to reduce harmonics and spurious frequencies

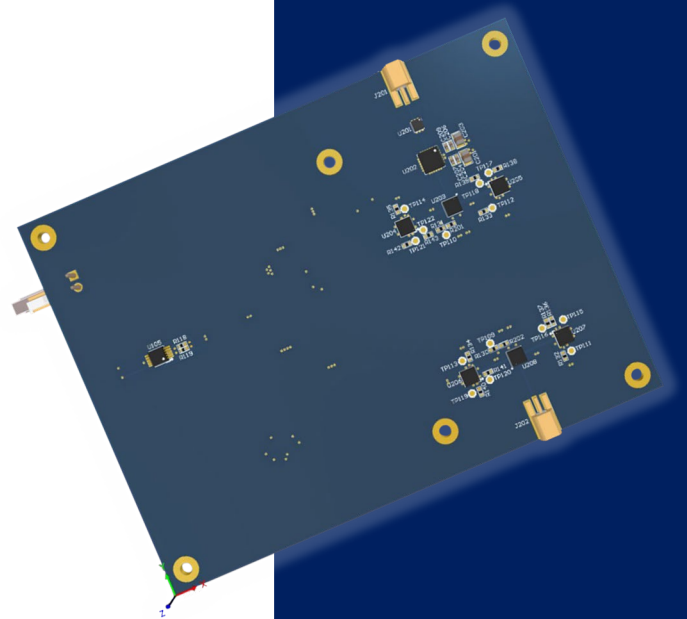
PRESELECTOR BLOCK DIAGRAM



SPECIFICATIONS

- Through gain: +4.8 dB to +9.8 dB
- Input noise figure: 2.5 dB
- Input impedance: 50 Ohms
- Input return loss: 10 dB typical
- Output impedance: 50 Ohms
- Output return loss: TBD
- IP3 (third-order intercept point): +18 dBm
- Power: 0.16 W @ 7–36 VDC

PRELIMINARY



ADDRESS

101 N. Wilmot Rd. Ste. 101
Tucson, AZ 85711

ORDER LINE

520.519.3131
sales@rincon.com

TECH SUPPORT

520.519.3132
tech-line@rincon.com

FAX/WEB

520.519.3120
www.rincon.com

INFORMATION SUBJECT TO CHANGE WITHOUT NOTICE.
PRODUCTS ARE SUBJECT TO THE RESTRICTIONS OF THE ARMS EXPORT CONTROL ACT.
VERSION 1.0.

RINCON
RESEARCH
EMPLOYEE OWNED